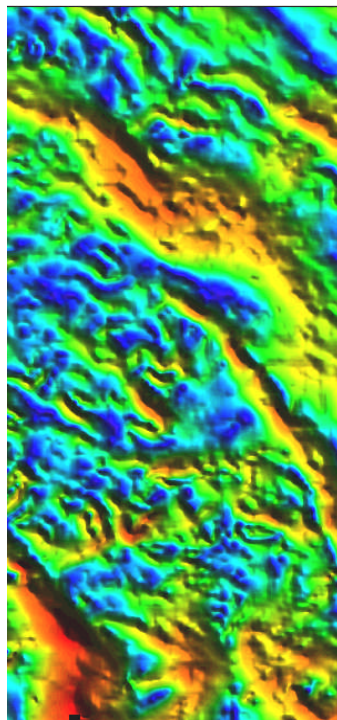
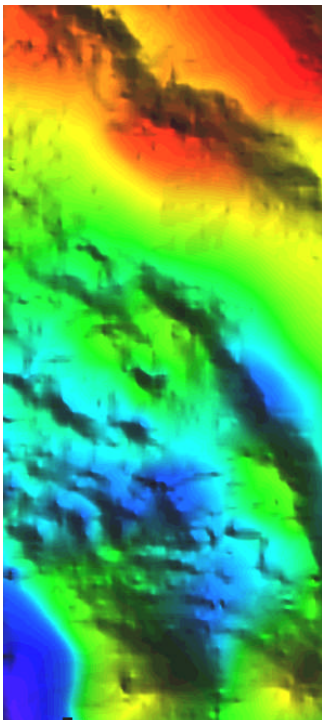
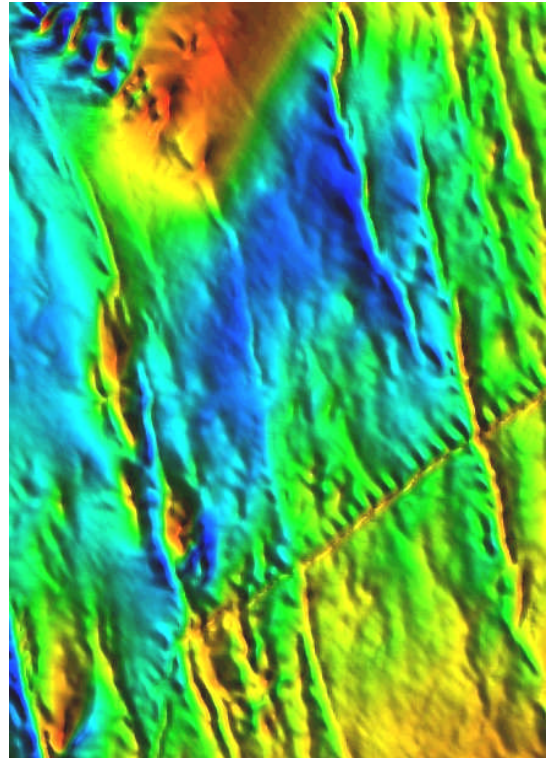


Reid

Geophysics

Gravity and Magnetics Specialist

- Survey design and commissioning
- Survey & processing QC
- Data enhancement for geological structure
- Modelling & interpretation
- Training - formal or informal - in-house or centralised
- Bespoke R & D
- **Intrepid** software support
- **30+ years experience**



Extract all the geological information from your data using modern techniques:

- isostatic residual
- depth ensemble filter
- Euler deconvolution
- gradient contact pick
- gravity tensor gradients
- pseudomagnetic and pseudogravity transforms

Contact Dr Alan Reid at:
Reid Geophysics Ltd
7 Keymer House, Michel Grove, Eastbourne, BN21 1JZ, UK
Phone: +44 (0) 1323 735 520,
Mobile +44 (0) 781 692 4728
e-mail: alan@reid-geophys.co.uk
website: www.reid-geophys.co.uk
Skype: alanbarryreid